



FAST-1/2 Polyclonal Antibody

Catalog No	YP-Ab-01706
Isotype	IgG
Reactivity	Human;Mouse
Applications	WB;IF;ELISA
Gene Name	FOXH1
Protein Name	Forkhead box protein H1
Immunogen	The antiserum was produced against synthesized peptide derived from human FOXH1. AA range:10-59
Specificity	FAST-1/2 Polyclonal Antibody detects endogenous levels of FAST-1/2 protein.
Formulation	Liquid in PBS containing 50% glycerol, 0.5% BSA and 0.02% sodium azide.
Source	Polyclonal, Rabbit,IgG
Purification	The antibody was affinity-purified from rabbit antiserum by affinity-chromatography using epitope-specific immunogen.
Dilution	Western Blot: 1/500 - 1/2000. Immunofluorescence: 1/200 - 1/1000. ELISA: 1/10000. Not yet tested in other applications.
Concentration	1 mg/ml
Purity	≥90%
Storage Stability	-20°C/1 year
Synonyms	FOXH1; FAST1; FAST2; Forkhead box protein H1; Forkhead activin signal transducer 1; Fast-1; hFAST-1; Forkhead activin signal transducer 2; Fast-2
Observed Band	40kD
Cell Pathway	Nucleus.
Tissue Specificity	Ubiquitous.
Function	domain:The FM region is required for binding smad2/sm4 complexes. FM2 is more effective than FM1 and only interacts with phosphorylated smad2 that is in an activated smad complex.,function:Transcriptional activator. Recognizes and binds to the DNA sequence 5'-TGT[GT][GT]ATT-3'. Required for induction of the goosecoid (GSC) promoter by TGF-beta or activin signaling. Forms a transcriptionally active complex containing FOXH1/SMAD2/SMAD4 on a site on the GSC promoter called TARE (TGF-beta/activin response element).,similarity:Contains 1 fork-head DNA-binding domain.,subunit:Interacts with the MH2 domains of SMAD2 and SMAD3.,tissue specificity:Ubiquitous.,
Background	FOXH1 encodes a human homolog of Xenopus forkhead activin signal transducer-1. FOXH1 protein binds SMAD2 and activates an activin response element via binding the DNA motif TGT(G/T)(T/G)ATT. [provided by RefSeq, Jul 2008],



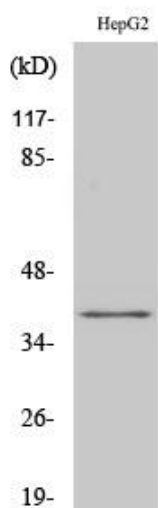
matters needing attention

Avoid repeated freezing and thawing!

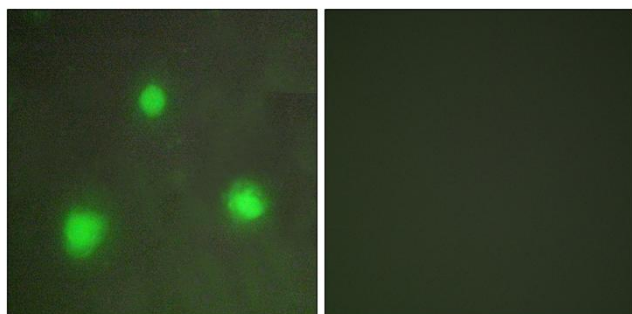
Usage suggestions

This product can be used in immunological reaction related experiments. For more information, please consult technical personnel.

Products Images



Western Blot analysis of various cells using FAST-1/2 Polyclonal Antibody cells nucleus extracted by Minute TM Cytoplasmic and Nuclear Fractionation kit (SC-003, Inventbiotech, MN, USA).



Immunofluorescence analysis of A549 cells, using FOXH1 Antibody. The picture on the right is blocked with the synthesized peptide.